



# PRODUCT SPECIFICATIONS

Explore the full range of StackWall product specifications in this detailed PDF, designed to support contractors, architects, and property owners. From dimensions & to product ratings & installation requirements, this spec sheet outlines everything you need to plan with confidence. Whether you're designing for residential, commercial, or wildfire-prone zones, StackWall's engineered precast systems offer strength, style, & smart integration.



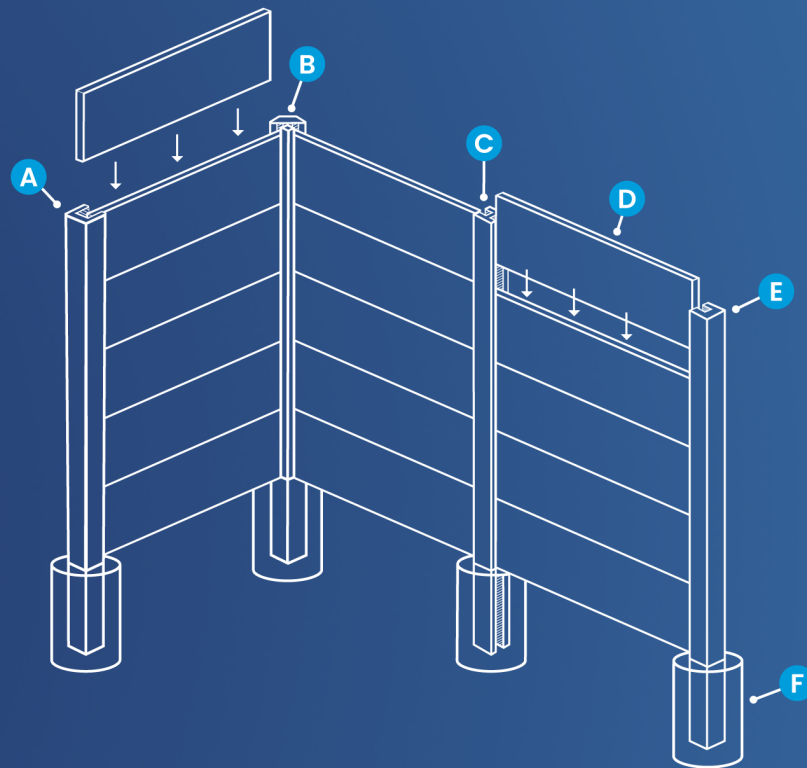
**PANEL DIMENSIONS**  
80" x 20"

**PANEL THICKNESS**  
Single - 2" Double - 4"

**WALL HEIGHT OPTIONS**  
2' to 30'

**SINGLE-SIDED WALLS**  
feature design on one side only.

**DOUBLE-SIDED WALLS** are two panels back-to-back offering different designs on each side - Perfect for neighbor customization.



**A** DOUBLE-SIDED STARTER POST  
**B** CORNER POST

**C** LINE POST  
**D** PANEL

**E** SINGLE-SIDED STARTER POST  
**F** CAISSON





# PRODUCT SPECIFICATIONS



StackWall precast fencing demonstrates exceptional fire resistance, achieving:

- 6-hour structural performance
- No surface ignition
- Low heat transmission
- Compliance with reinforced concrete fire standards



StackWall is engineered to stay upright & safe in a California earthquake. Even if the ground shakes, your wall won't.

- Designed to Meet All Seismic Categories
- Strong Foundation System
- Engineered for Earthquake Forces
- Code-Compliant Across California



StackWall is engineered to withstand high wind forces up to 110+ mph, offering durable protection that goes well beyond basic residential standards.

- 110+ MPH wind speed minimum rating
- Built to Code
- (wind speeds of Cat 2 hurricanes)
- Designed for open terrain & high wind zones



StackWall's 6-foot precast concrete wall has been professionally tested & shown to reduce noise by 6 to 12 dB, depending on the sound's height & distance.

For homeowners, multi-family developments, schools, & businesses, this means a quieter, more comfortable environment that reduces the impact of everyday noise.



StackWall's precast concrete panels exceed the required strength by over 60%, delivering a level of performance well above standard expectations.

StackWall's high concrete strength means it's built to last, resisting cracking, wear, & heavy pressure over time.



**MINIMAL  
UPKEEP**



**SUSTAINABLE  
MATERIALS**



**2 SIDES  
1 WALL**



**100+  
DESIGNS**



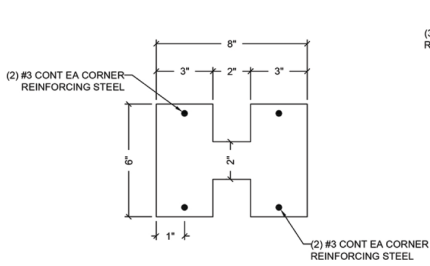
**PROPERTY  
VALUE**



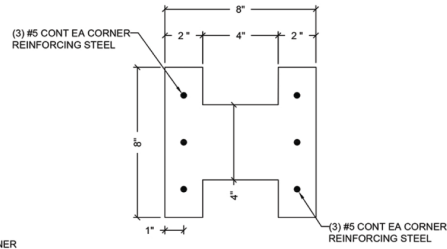
**WORRY  
FREE**



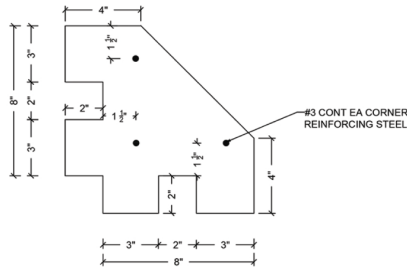
# PRODUCT SPECIFICATIONS



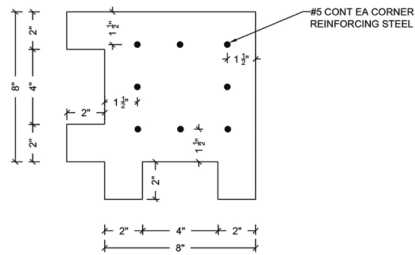
4 COLUMN SECTION 6x8  
SCALE: 3"=1'-0"



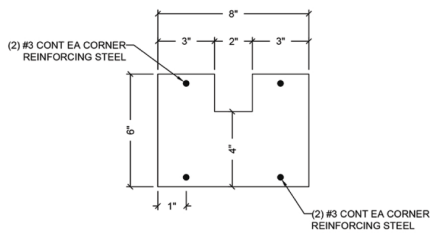
8 COLUMN SECTION 8x8  
SCALE: 3"=1'-0"



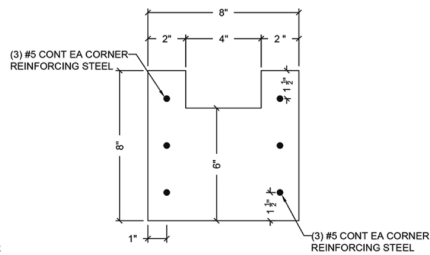
5 CORNER COLUMN SECTION 6x8  
SCALE: 3"=1'-0"



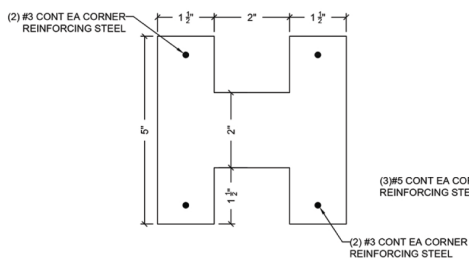
9 CORNER COLUMN SECTION 8x8  
SCALE: 3"=1'-0"



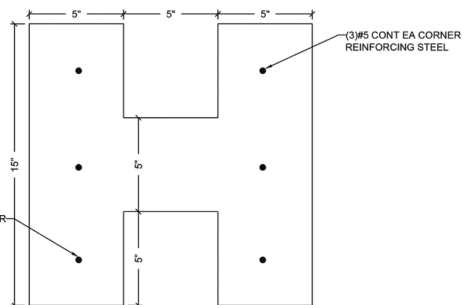
6 END COLUMN SECTION 6x8  
SCALE: 3"=1'-0"



10 END COLUMN SECTION 8x8  
SCALE: 3"=1'-0"



7 COLUMN SECTION 5x5  
SCALE: 6"=1'-0"



11 COLUMN SECTION 15x15  
SCALE: 3"=1'-0"

PROJECT NO: SW25-001  
DATE: 01/01/2025



DETAIL SHEET

DESIGNED BY: S.S.  
CHECKED BY: A.A.

PREPARED FOR:  
STACKWALL  
PROJECT ADDRESS:  
149 S SAN ANTONIO AVE.  
POMONA, CA  
91766

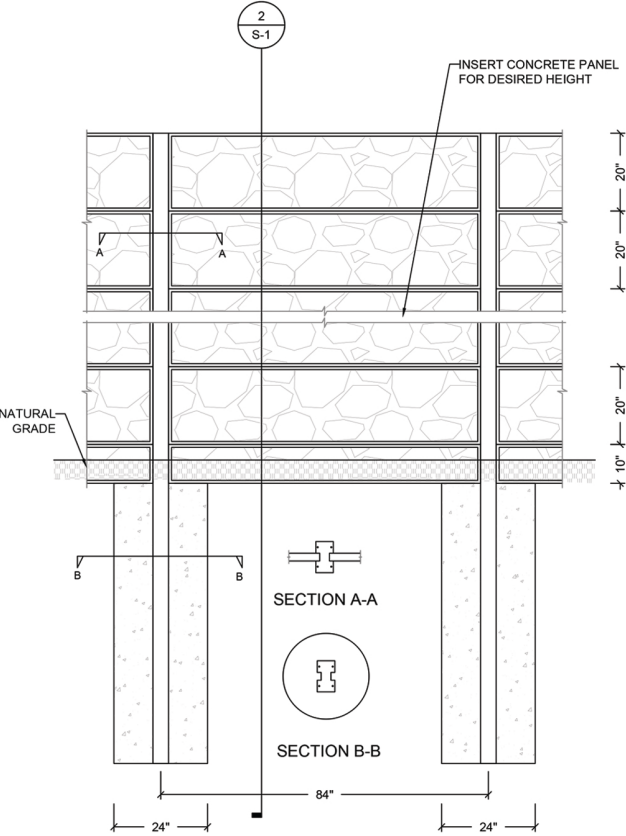
REV	DATE	DESCRIPTION	BY
1			
2			
3			
4			
5			

STACKWALL

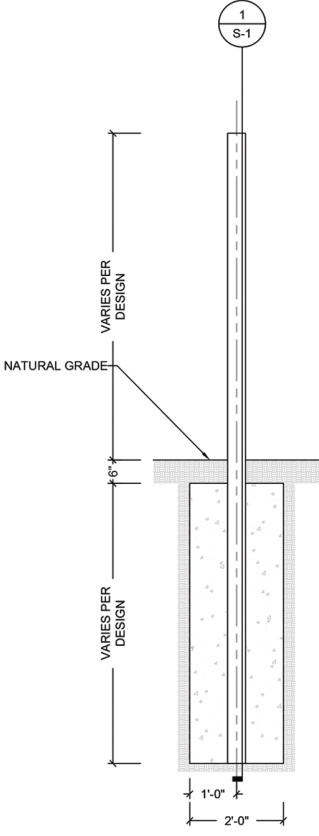
S-1



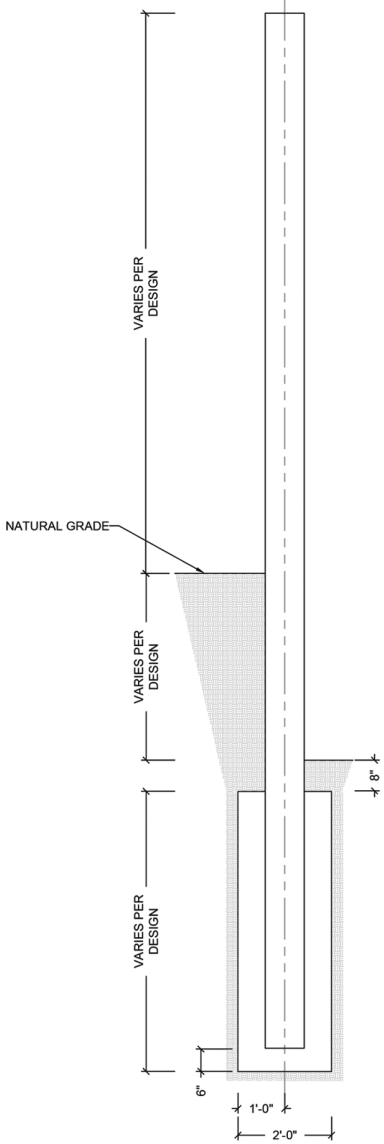
# PRODUCT SPECIFICATIONS



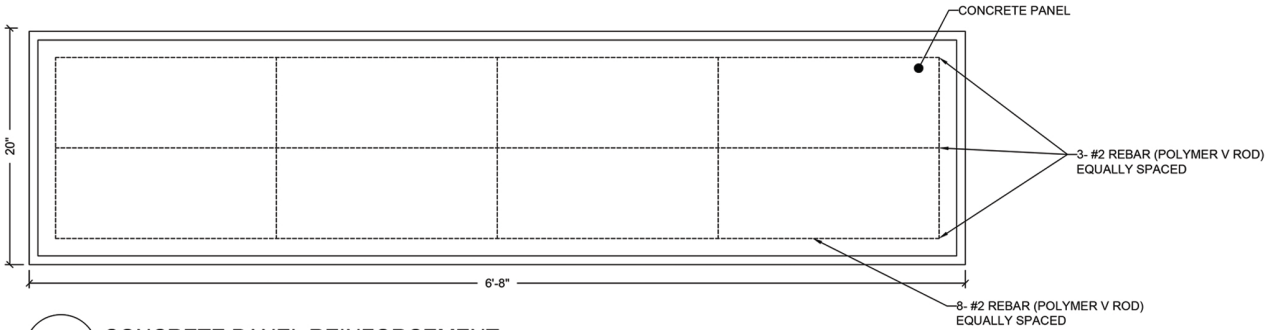
1 PANEL REINFORCING ELEVATION  
SCALE:  $\frac{1}{2}"=1'-0"$



2 FENCE SECTION  
SCALE:  $\frac{1}{2}"=1'-0"$



3 FENCE SECTION  
SCALE:  $\frac{1}{2}"=1'-0"$



12 CONCRETE PANEL REINFORCEMENT  
SCALE:  $1 \frac{1}{2}"=1'-0"$